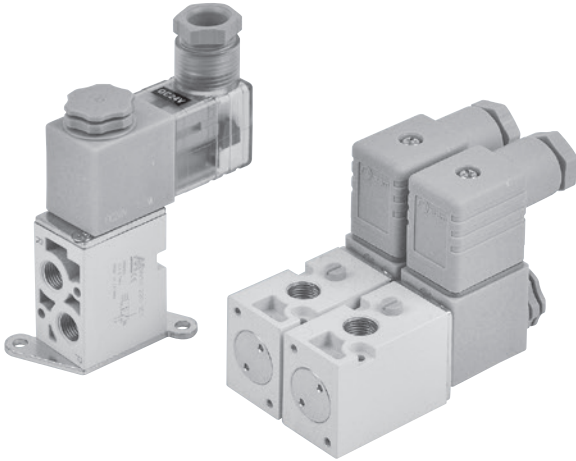


MVSV-220 series

SOLENOID VALVE (DIRECT OPERATED TYPE)



Caution

- In the case of continuous energization, it is recommended to use NC/NO configuration in the design of the pneumatic circuit to avoid the temperature rise of continuous energization.
- For continuously energized situation, please contact us.

Specification

Model		3E1
Bore No.		6A
Port size		1/8
No. of port		3
No. of position		2
Medium		Air, low vacuum
Operating pressure range		-101 kPa ~ 0.7 MPa
Proof pressure		1 MPa
Effective orifice (mm ²)		P→A: 5.2, R→A: 6.0 A→P: 6.2, A→R: 5.8
Response time (ms)		20
Ambient temperature		-5~+50°C (No freezing)
Voltage		DC24V
Power consumption	Standard	7 W
	Power saving	Start:7W (*1) Power saving:3W
Available voltage range *2		±10%
Insulation class		F class
Weight (g)		164 (with bracket: 181)

*1. Power saving covert time 350ms.

*2. Energy saving DC24V: -5%~+10%.

Order example of valve

MVSV – 220 – 3E1 – B – DC24 – L – G

MODEL

BODY WIDTH

3: 3 way (3 port)

VOLTAGE
DC24V

Blank: Without
B: Bracket

E1: Single Solenoid

STANDARD (7W)
Blank: DIN terminal
L: DIN terminal with LED indicator

POWER SAVING (3W)
KL: DIN terminal with LED indicator

PORT THREAD
Blank: Rc thread
G: G thread
NPT: NPT thread

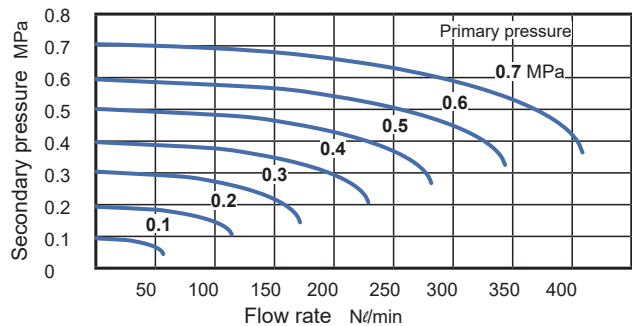
Order example of bracket

MVSV – 220 – B

MODEL

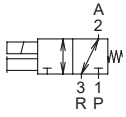
BRACKET

Flow features

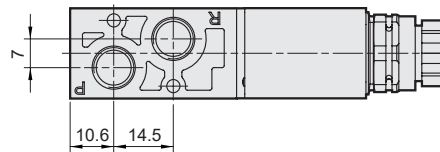
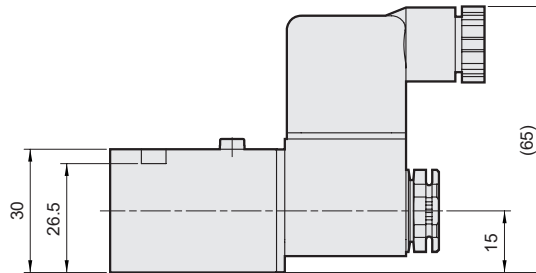
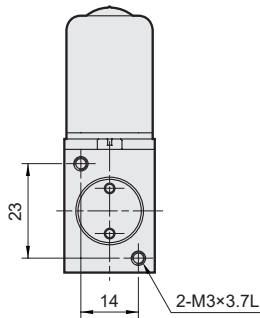
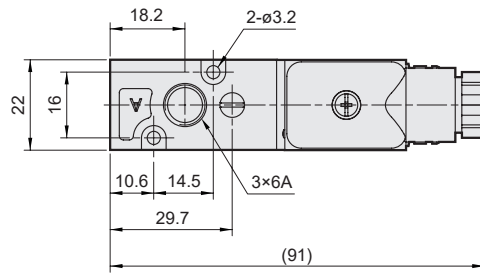


MVSV-220 Dimensions / Mounting accessories

SOLENOID VALVE (DIRECT OPERATED TYPE)



Port 1P: NC
Port 2A: COM
Port 3R: NO



Mounting accessories

MVSV-220-B

Bracket

