

MJ* / MRJ series

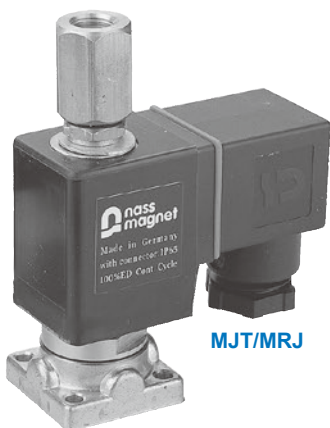
2/2 WAY N.C., N.O. PLUNGER TYPE ACTUATOR VALVE



mindman

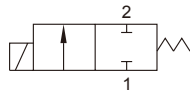


MJS/MJR

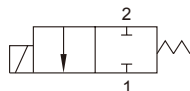


MJT/MRJ

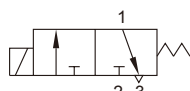
2/2 Function 1



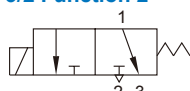
2/2 Function 2



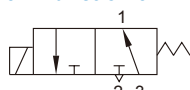
3/2 Function 1



3/2 Function 2



3/2 Function 3



Specification

- IP65 100% ED coil.
- PTB approval EExm II T4 coil.
- For air, water, gas, oil, vacuum (10^{-3} torr).

Power consumption

Coil power	4	5	3E
AC (VA)	19.5	23.0	9.2
DC (W)	15.0	18.5	10.0

Dimensions

Model	MJS	MJR	MJT / MRJ
Body mat'l	C	S	—
Dimension (mm)			
H	68	71	67
N.W (g)	4	308	316
	5	394	402
	3E	614	622

Order example

MJS - 00 - 1 - N - S - 4 - D - □ - AC110

MODEL
MJS
MJR
MJT
MRJ

CODE
00

FIG.
1, 2, 3,
4, 5

BODY MAT'L
C: Brass
S: S. Steel

PLUG
Blank: DIN
D: LED
G: 1/2" NPT

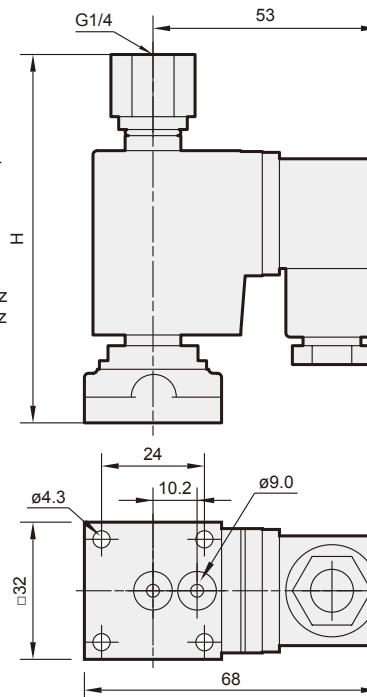
VOLTAGE
AC220V(50/60)Hz
AC110V(50/60)Hz
DC24V

SEAL MAT'L
N: NBR
J: EPDM
V: Viton

COIL
4: #4
5: Bigger
3E: Explosion-
Proof (*)

MANUAL
Blank: Without
M: With manual

* Explosion-Proof (3E) coil with LED (D) plug is not applicable.



Specification

Model MJS : Brass body, 2/2 way N.C. actuator valve.																			
Code	Fig. no.	Mat'l		Coil	Orifice mm		Temp. °C					Working press. (0~ bar)						CV	Torr
		Seal	Body				Coil 4, 3E		Coil 5			Coil 4		Coil 5		Coil 3E			
							N	J,V	N	J	V	Funtion 1							
												AC	DC	AC	DC	AC	DC		
00	1	N J V	C S*	4 5 3E	1.6		-5 ~ 80	-10 ~ 145	-5 ~ 80	-10 ~ 145	-10 ~ 160	30	20	40	30	20	14	0.08	10 ⁻²
	2.0				24	15						30	20	14	10				
	2.5				14	10						20	15	10	7				
	3.0				10	7						15	10	7	5				
	3.5				7	4						10	7	5	4				

Model MJR : Brass body, 2/2 way N.C. round trip actuator valve.																				
Code	Fig. no.	Mat'l		Coil	Orifice mm		Temp. 5~°C				Working press. (0~ bar)									CV
		Seal	Body				Coil 4, 3E		Coil 5		Coil 4			Coil 5			Coil 3E			
							N	J,V	N	J,V	1	2	A/DC	1	2	A/DC	1	2	A/DC	
											AC	DC	AC	DC	AC	DC	AC	DC	A/DC	
00	1	N J V	C S*	4 5 3E	1.6		80	150	90	150	30	20	10	40	30	14	20	14	7	0.10
	2.0				20	14					7	30	20	10	14	10	5	0.15		
	2.4				14	10					5	20	14	7	10	7	4	0.20		
	3.0				10	7					4	14	10	5	7	5	3	0.31		
	3.5				7	5					2	10	7	4	5	4	2	0.42		

Model MJT : Brass body, 3/2 way N.C. actuator valve.																	
Code	Fig. no.	Mat'l		Coil	Orifice mm		Temp. 5~°C				Working press. (0~ bar)						CV
		Seal	Body				Coil 4, 3E		Coil 5		Coil 4		Coil 5		Coil 3E		
							N	J,V	N	J,V	1	2	1	2	1	2	
											AC/DC	Funtion	AC/DC	Funtion	AC/DC	Funtion	
00	1	N J V	C S*	4 5 3E	1.6	1.6	80	150	90	150	10	16	14	20	7	10	0.10
	2.0				1.6	7					16	10	20	5	10	0.15	
	2.4				2.0	5					13	7	16	4	7	0.20	
	3.0				2.2	4					10	5	13	3	5	0.31	
	3.5				2.5	2					7	4	10	2	3	0.42	

Model MRJ : Brass body, 3/2 way N.O. actuator valve.																	
Code	Fig. no.	Mat'l		Coil	Orifice mm		Temp. 5~°C				Working press. (0~ bar)						CV
		Seal	Body				Coil 4, 3E		Coil 5		Coil 4		Coil 5		Coil 3E		
							N	J,V	N	J,V	AC/DC, Funtion 3						
											AC/DC, Funtion 3						
00	1	N J V	C S*	4 5 3E	2.0	1.6	80	150	90	150	7	10	3	0.10			
	2.4				2.0	5					7	2	0.15				
	2.4				2.2	3					5	1	0.17				
	3.0				2.5	1					3	—	0.20				
	3.5				3.0	—					1	—	0.31				

*1. S.S. body is available.

*2. Connect air source to outlet port for vacuum application.