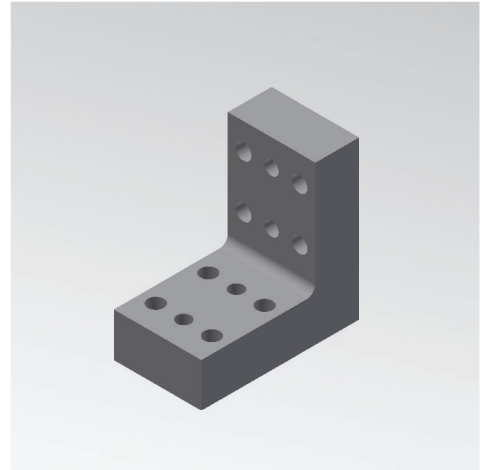
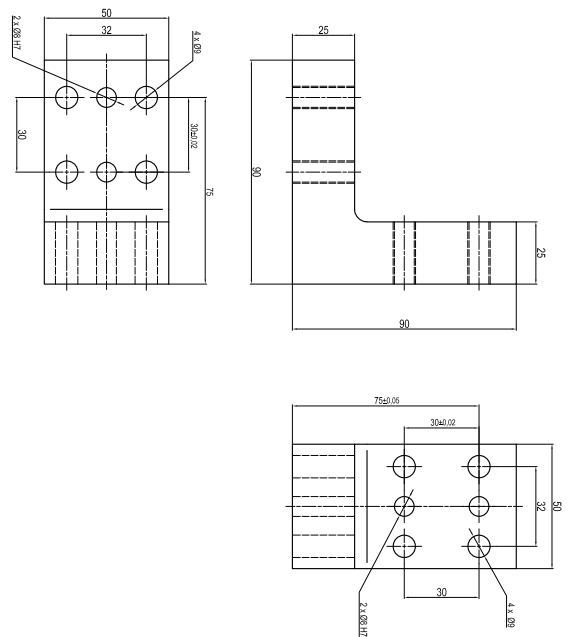
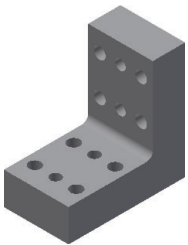


Flange mounts for pin units

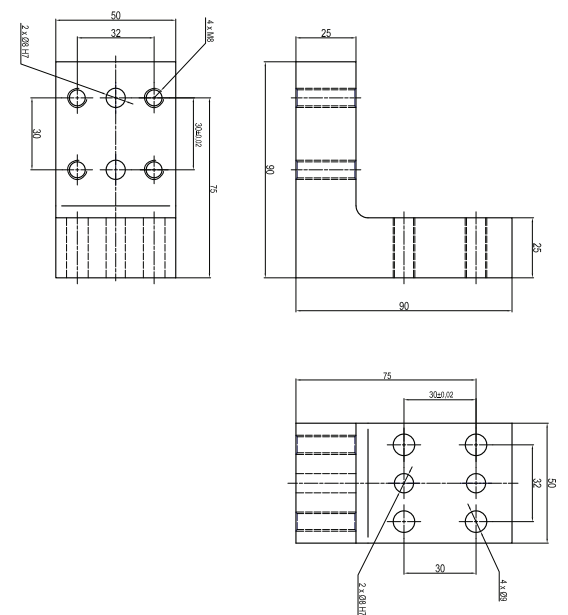
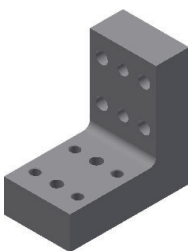


GR8SSLC Flange mount for pin units



	Tightening torque	Screw
GR8SSLC	25 Nm	M8
Material:	Aluminium	
Weight:	0,478 kg	

GR8SSLCM8 Flange mount for pin units with M8 threads



	Tightening torque	Screw
GR8SSLCM8	25 Nm	M8
Material:	Aluminium	
Weight:	0,485 kg	