

# PNEUMATIC LOCATING PIN UNITS

Pneumatic retractable locating pin unit, typically used in welding applications to locate metal sheets in a definite position.

Available version with hand lever and toggle-joint mechanism

- Metal rod scraper on single shaft only
- Antirotation system
- Electronic sensor with M12 swivel connector or pneumatic sensor



**UNICLAMP**  
next generation

## MILLIONS OF CYCLES

3 Millions of operations granted with no maintenance required



## QR CODE

Helps identify products quickly and easily



## LIGHTWEIGHT

Housing in aluminium alloy  
The lightest among market equivalent devices



## REDUCED DIMENSIONS



## DOUBLE GUIDE

Precision





## COMPACT SIZE 32

Pneumatic pin unit with very compact overall dimensions

- Pneumatic with side or rear sensor  $\varnothing 32$  mm



## SINGLE AND DOUBLE ROD

Standard range of pin units offering many version combinations with single or double rod and equipped with hand lever for manual operations

- Pneumatic  $\varnothing 40-50-63$  mm
- Pneumatic with hand lever  $\varnothing 50$  mm
- Manual 50 mm
- Wide range of shaft-ends



## IRREVERSIBLE

Pin units equipped with toggle-joint mechanism to maintain the position even with lack of air

- Single and double rod  $\varnothing 40-50$  mm
- With hand lever  $\varnothing 40-50$  mm



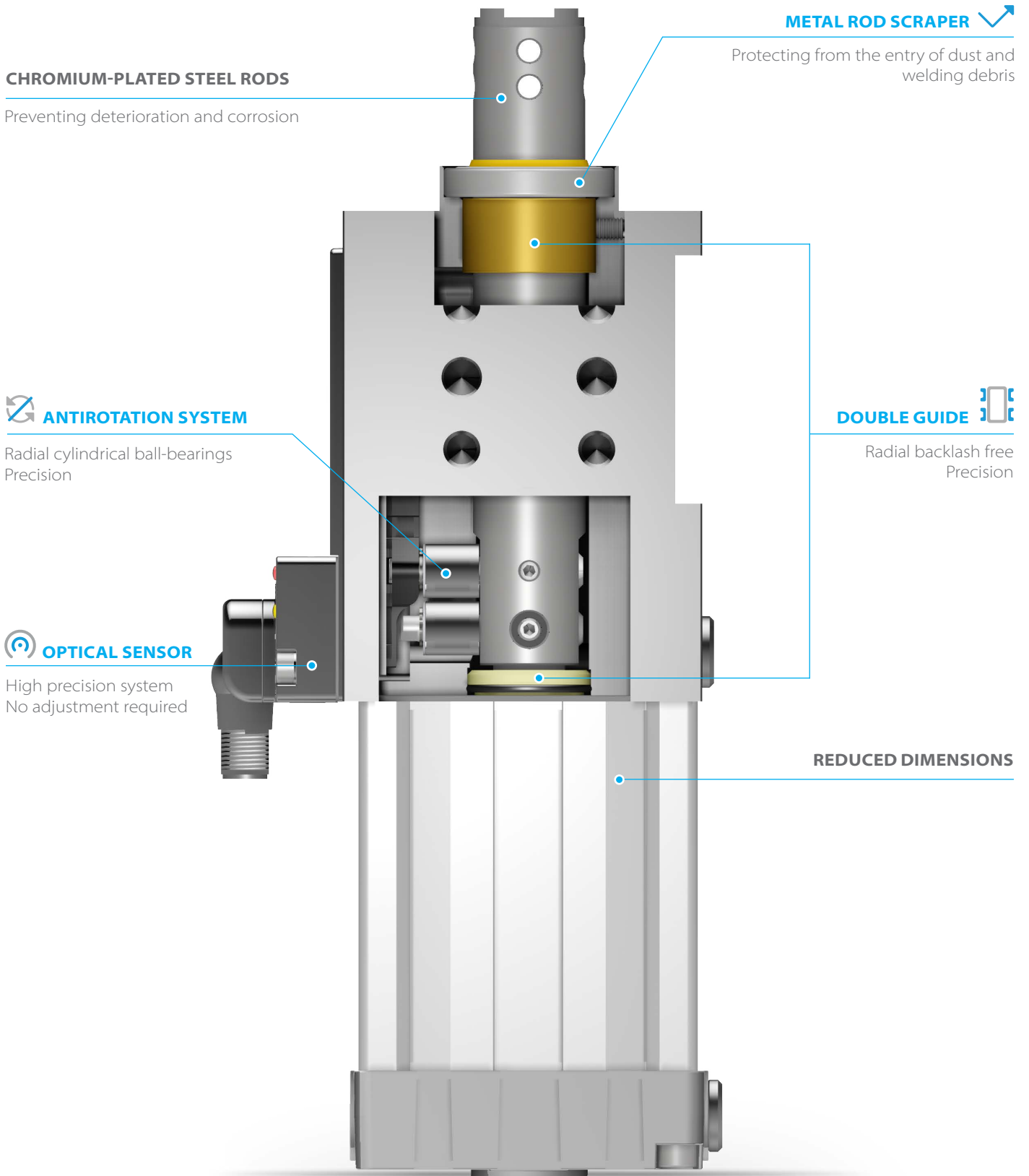
## CNOMO STANDARD

Pin unit construction meeting CNOMO Standard

- Single rod  $\varnothing 50-63$  mm
- With hand lever  $\varnothing 50$  mm

# LOCATING PIN UNITS FEATURES

## SINGLE ROD VERSION



## DOUBLE ROD VERSION

**180° ORIENTABLE RODS**

Possibility to self-orientate the rods 180°  
Stock reduction

**METAL ROD SCRAPER**

Protecting from the entry of dust and  
welding debris

**OPTICAL SENSOR**

High precision system  
No adjustment required

**CHROMIUM-PLATED STEEL RODS**

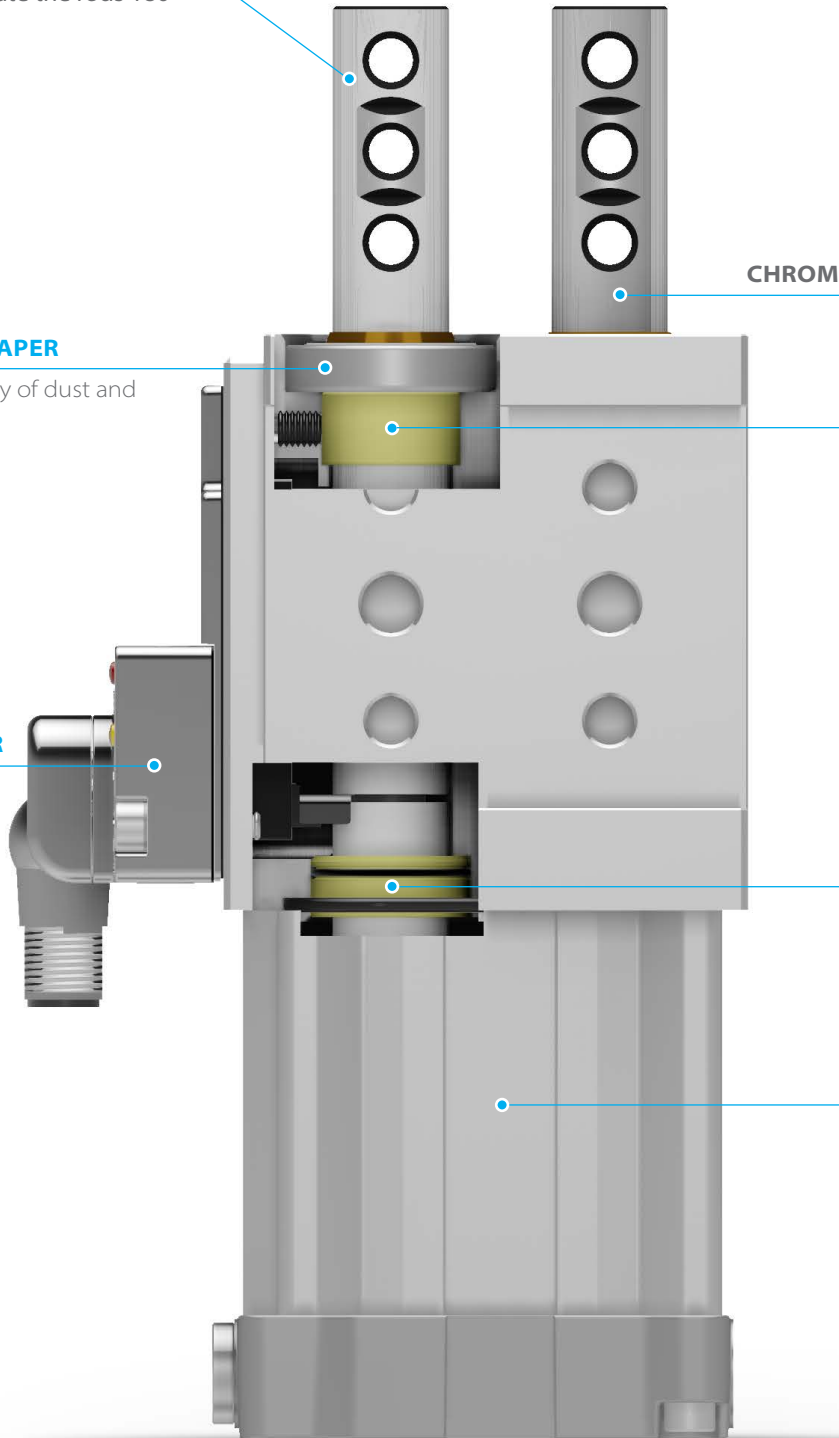
Preventing deterioration  
and corrosion

**DOUBLE GUIDE**

Radial backlash free  
Precision

**REDUCED DIMENSIONS**

Compact end covers



# LOCATING PIN UNITS FEATURES

## IRREVERSIBLE VERSION

### **ORIENTABLE ROD**

Possibility to self-orientate the rods 180°  
Stock reduction

### **METAL ROD SCRAPER**

Protecting from the entry of dust  
and welding debris

### **OPTICAL SENSOR**

High precision system  
No adjustment required

### **CHROMIUM-PLATED STEEL RODS**

Preventing deterioration and corrosion

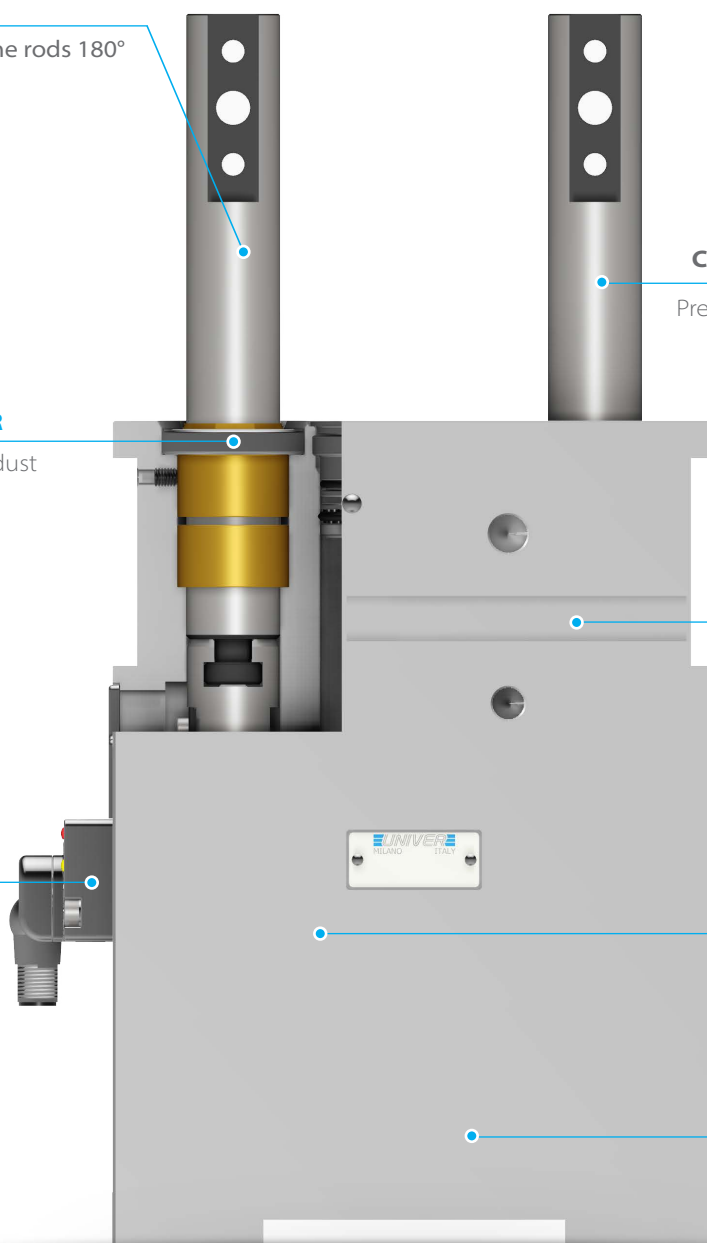
### **DOUBLE GUIDE**

Radial backlash free  
Precision

### **COMPACT DIMENSIONS**

### **TOGGLE-JOINT**

Irreversible rod extend position  
High trust force





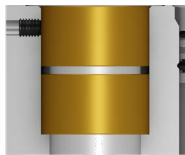
### METAL ROD SCRAPER

To prevent dust and welding debris entering the unit body, each piston rod is equipped with a metal rod scraper



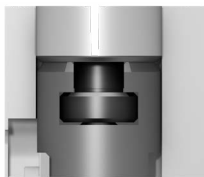
### ANTIROTATION SYSTEM

Radial cylindrical ball-bearings enable the shaft not to rotate axially and guarantee positioning precision



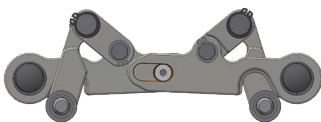
### DOUBLE GUIDE

Internal piston rod double guide assures zero radial backlash and positioning precision



### ORIENTABLE RODS

The piston rods on double rod models are 180° orientable by the user to offer installation flexibility and stock reduction



### IRREVERSIBLE

Models equipped with the UNIVER original toggle-joint mechanism guarantee irreversibility of the extended piston rod and high thrust force

Irreversible even with lack of air and without external stops



### OPTICAL SENSOR

Fully metal body

One single sensor for the whole range of products

IP67 protection

M12 swivel connector (0-90°)

High precision

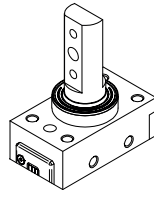
No set up

Two-parts design: electronic part outside the unit (available as spare part), optical part inside the unit (no touch point)

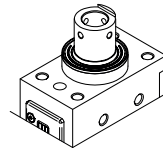
Insensitive to high magnetic fields, typical of new and modern welding systems like aluminium welding

Industry-recognized, tested and proven sensor

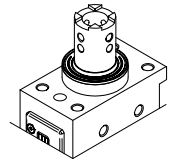
# LOCATING PIN UNITS RODS



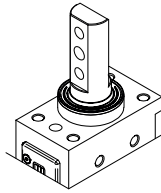
Rod for off-set pins



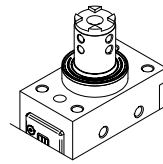
Profiled end



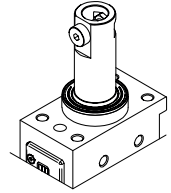
Cross-profiled Ø16



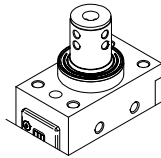
Oversized dowel holes



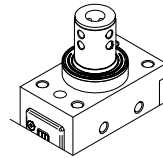
Cross-profiled Ø10



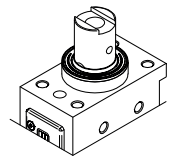
NAAMS COMPATIBLE Ø16



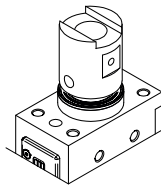
Flat Ø10



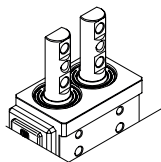
FLAT Ø12



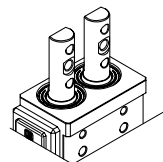
CNOMO Ø12



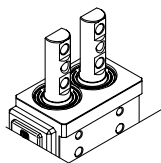
CNOMO Ø20



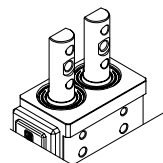
ROD FOR OFFSET PINS  
2 SCREWS - 1 DOWEL



ROD FOR OFFSET PINS  
1 SCREW - 2 DOWELS



ROD FOR OFFSET PINS  
(ROD PLANE MATCHING  
BODY MIDDLE AXIS)  
2 SCREWS - 1 DOWEL



ROD FOR OFFSET PINS  
(ROD PLANE MATCHING  
BODY MIDDLE AXIS)  
1 SCREW - 2 DOWELS

# COMPLEMENTARY PRODUCTS



## **PNEUMATIC SENSOR**

- Compact design
- Fully metal body
- Easy to be replaced
- One-piece construction



## **HAND LEVER**

- Ergonomic design
- Welding debris resistant



# LCQ 63

Pneumatic retractable pin units, Ø63 mm, single rod, CNOMO standard with hand lever

Pneumatic retractable pin unit, conforming to CNOMO standard, single rod and hand lever. Typically used in welding applications to locate metal sheets in a definite position.

- Metal rod scraper
- Antirotation system
- Electronic sensor with M12 connector
- Rod's inner diameter Ø12 and Ø20 available



3

## CHARACTERISTICS

Operating temperature	5° ÷ 45° C
Min./Max. operating pressure	0,4 / 0,6 MPa
Bore Ø	63 mm
Weight	3,6 Kg
Pneumatic supply ports	G1/8 on both sides
Sensor	electronic with M12
Supply voltage	10 ÷ 30 Vdc
IP code	IP 65

## CODIFICATION KEY

LC | Q | 63 | 050 | U | 12 | R |

1 | 2 | 3 | 4 | 5 | 6 | 7



LIGHTWEIGHT



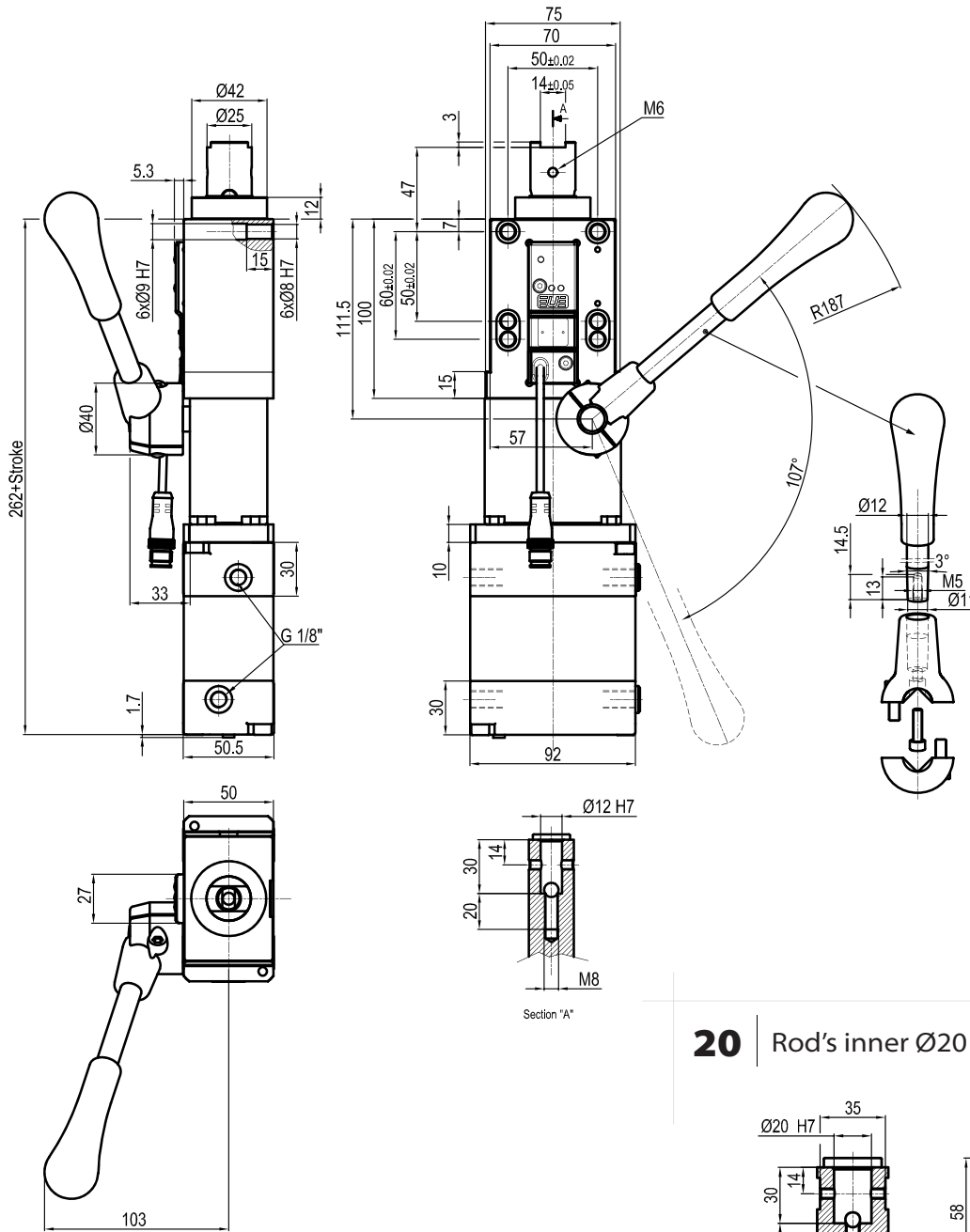
METAL SCRAPER



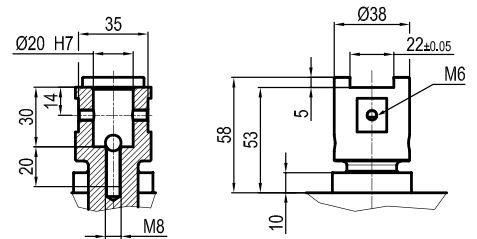
ANTI ROTATION

1	<b>SERIES</b> LC = Locating retractable pin unit conforming to CNOMO standard	5	<b>SENSOR</b> U = Electronic sensor, M12 (DF-2B3)
2	<b>VERSION</b> Q = Pneumatic, single rod with hand lever	6	<b>ROD'S INNER Ø</b> 12 = Ø12 mm 20 = Ø20 mm
3	<b>SIZE</b> 63 = Ø63 mm	7	<b>ROD SCRAPER</b> R = Metallic rod scraper
4	<b>STROKE</b> 025 = 25 mm 050 = 50 mm		

**12** Rod's inner Ø12 mm



**20** Rod's inner Ø20 mm



Sensors



Electronic  
DF-2B3

Accessories



Handlever  
UBF255063