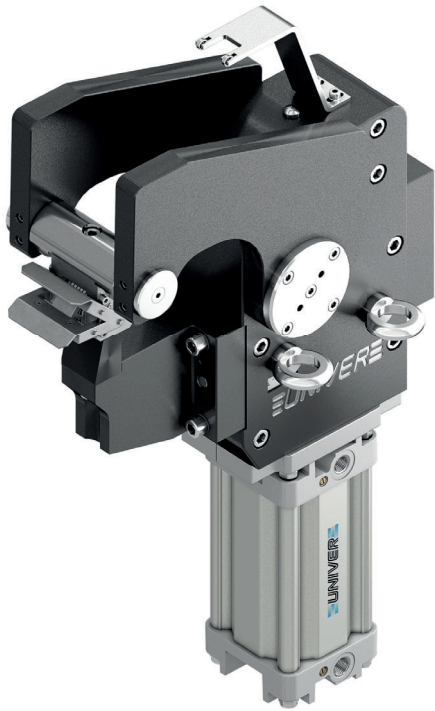


UPR 05

Marking unit with marking head, 5000 Nm



Marking unit with 5000 Nm clamping moment specially designed for marking serial numbers on metal sheets. The integrated compensation allows to mark different metal sheet thickness (up to 2 mm) without further adjustments. High customisation rate thanks to the possibility to choose the marking position and the marking head type: number of characters, character height and depth.

- Marking head up to 7 characters
- Integrated compensation up to 2 mm
- Automatic or manual marking head available
- Possibility to orient the marking surface
- 73° opening angle
- Optical sensor
- Fully protected Internal mechanical system

CHARACTERISTICS

Operating temperature	5° ÷ 45° C
Min./Max. Operating pressure	0,4 / 0,6 MPa
Opening angle	73°
Cylinder bore Ø	100 mm
Marking force (0,5 MPa)	80 mm (38,5 KN) 130 mm (27,5 KN)
Moment (0,55 Mpa)	5000 Nm
Weight	80 mm (71 Kg) 130 mm (77 Kg)
Air cycle (0,5 MPa)	11,2 NI
Pneumatic supply ports	G1/2
Sensor	electronic (optical)
Supply voltage	10 ÷ 30 Vdc
IP code	IP 65



COMPENSATION



OPTICAL SENSOR

CODIFICATION KEY

UPR	05	08	73	M	EE	S	0	
1	2	3	4	5	6	7	8	9

1 SERIES
UPR = UNICLAMP Marking units

2 SIZE
05 = 5000 Nm Ø 100 mm cylinder

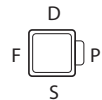
3 ARM
08 = 82 mm
13 = 132 mm
_ _ = other dimensions available

4 OPENING ANGLE
73 = 73° Fixed opening angle
_ _ = other opening angles available

5 MARKING HEAD POSITION
M = on the moving part
F = on the fixed part

6 PROGRESSIVE NUMBERING
EE = Standard version
Progressive numbers are assigned by the Sales Dept.

7 CONNECTIONS
S = Left side (Standard)
D = Right side
F = Front side
P = Rear side

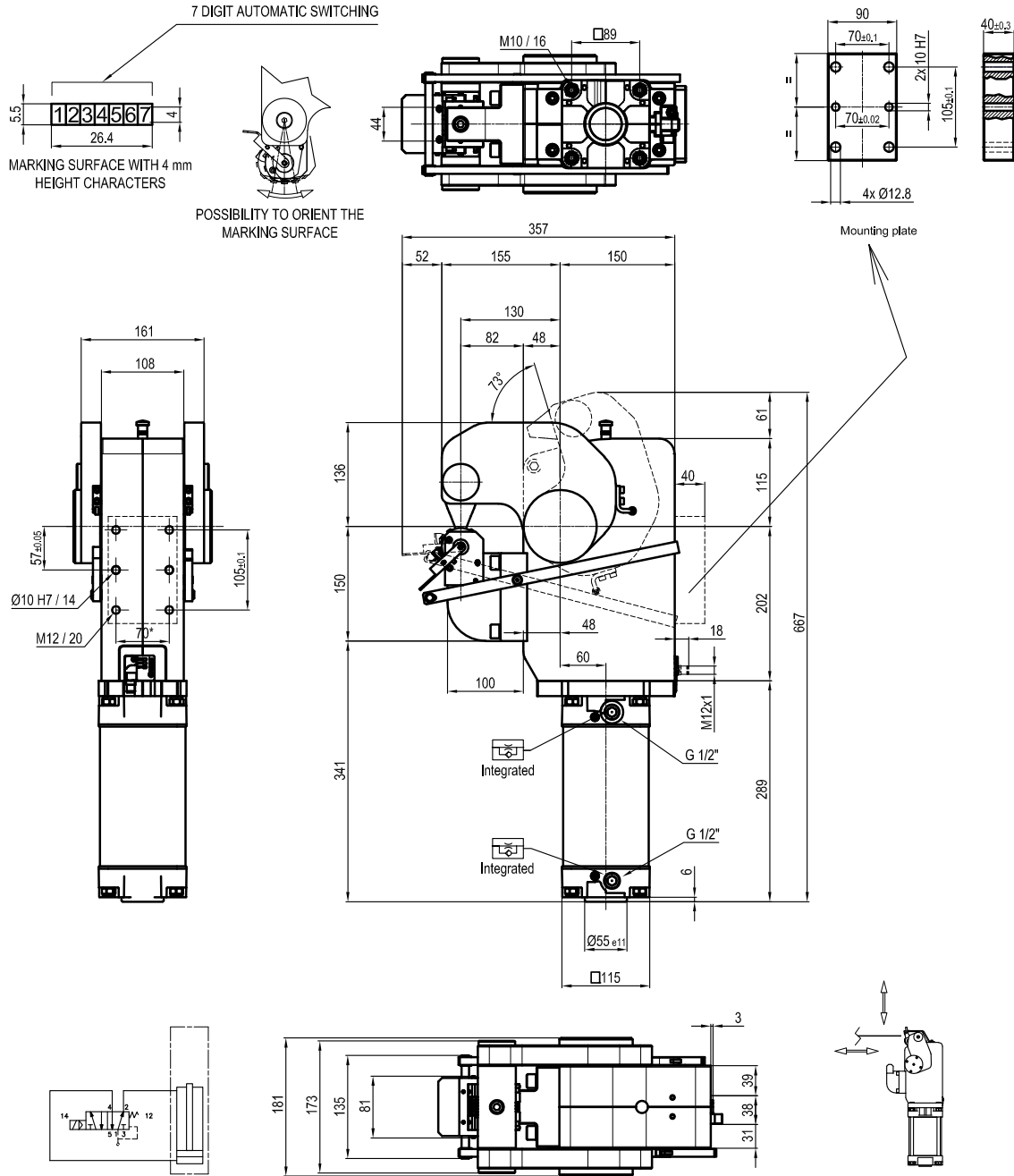


8 PRODUCT REVISION
Assigned by UNIVER

9 ATEX
X = ATEX option
See ATEX Catalogue for types and versions

08/F Character mounting

On the fixed part



* TOLERANCE BETWEEN DOWELS $\pm 0,02$, BETWEEN SCREW HOLES $\pm 0,1$

Sensors

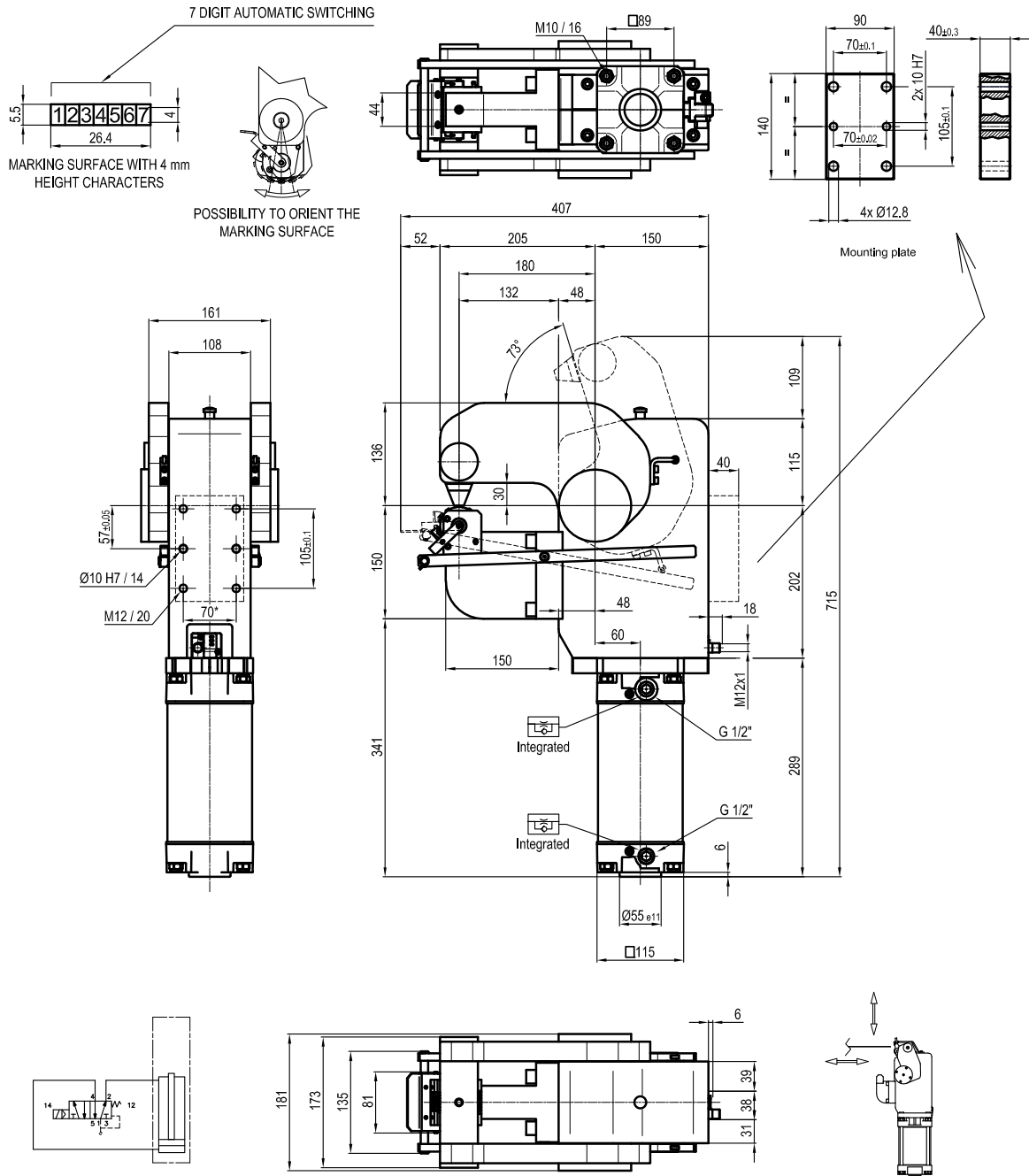


Electronic (optical)

- DF-K PNP M12
- DF-J NPN M12
- DF-Y PNP M12 White LED

13/F Character mounting

On the fixed part



* TOLERANCE BETWEEN DOWELS ± 0,02, BETWEEN SCREW HOLES ± 0,1

Sensors

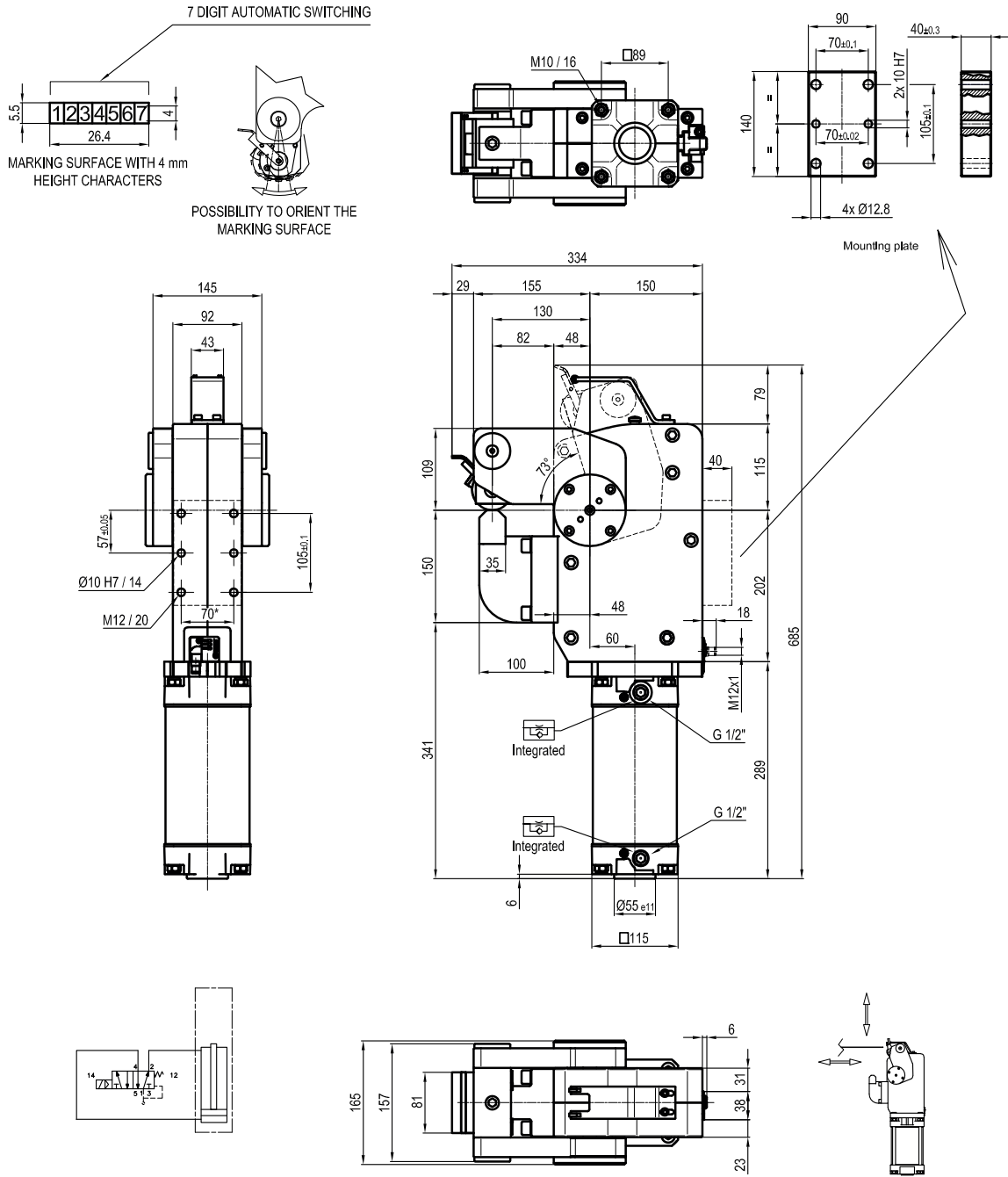


Electronic (optical)

- DF-K PNP M12
- DF-J NPN M12
- DF-Y PNP M12 White LED

08/M | Character mounting

On the moving part



* TOLERANCE BETWEEN DOWELS ± 0,02, BETWEEN SCREW HOLES ± 0,1

Sensors



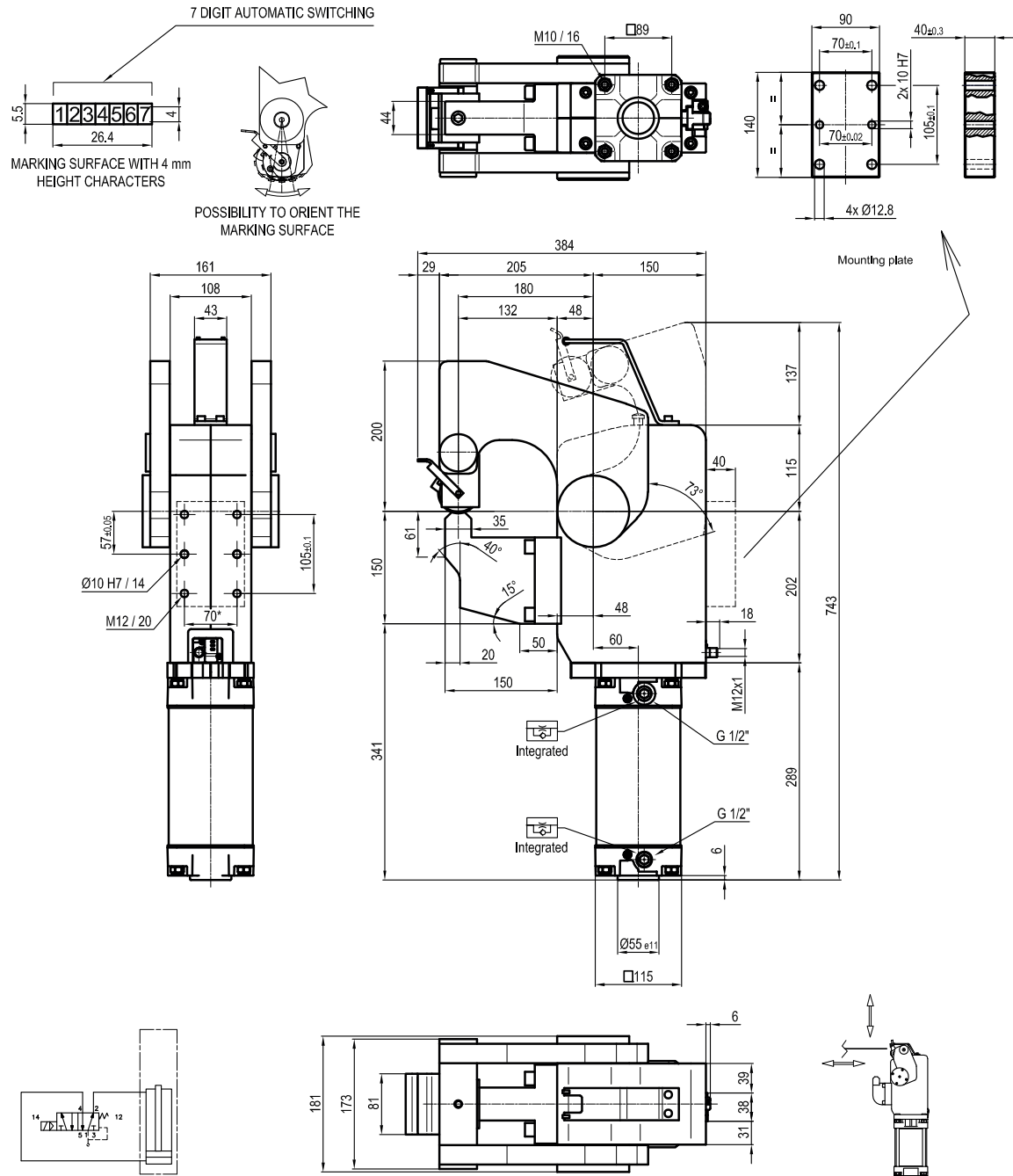
Electronic (optical)

- DF-K PNP M12
- DF-J NPN M12
- DF-Y PNP M12 White LED

13/M

Character mounting

On the moving part



* TOLERANCE BETWEEN DOWELS $\pm 0,02$, BETWEEN SCREW HOLES $\pm 0,1$

Sensors



Electronic (optical)

- DF-K PNP M12
- DF-J NPN M12
- DF-Y PNP M12 White LED