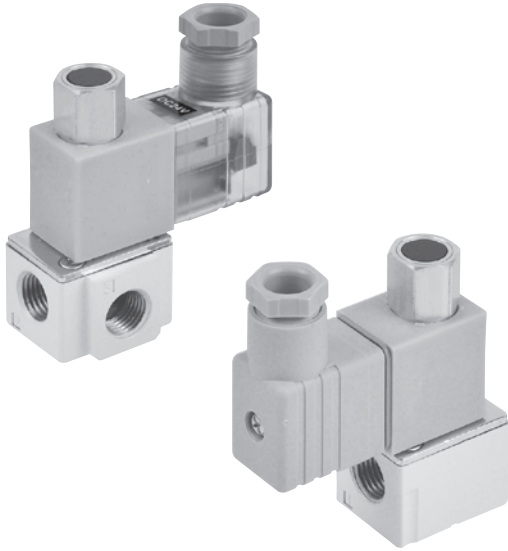


# MVDC-300 series

SOLENOID VALVE (DIRECT OPERATED TYPE)



## Specification

Model		3E1	
Bore No.		6A	8A
Port size		Rc1/8	Rc1/4
No. of port		3	
No. of position		2	
Medium		Air, low vacuum	
Operating pressure range		-101 kPa ~ 1.0 MPa	
Proof pressure		1.5 MPa	
Effective orifice (mm <sup>2</sup> )	P→A:	4.0	4.1
	A→R:	4.4	4.6
	R→A:	4.2	4.2
	A→P:	3.9	4.0
Response time (ms)		20	
Ambient temperature		-5~+50°C (No freezing)	
Voltage		DC24V	
Power consumption	Standard	7 W	
	Power saving	Start:7W (*1) Power saving:3W	
Available voltage range *2		±10%	
Insulation class		F class	
Weight (g)		156 (188) *3	153 (185)*3

## Caution

- In the case of continuous energization, it is recommended to use NC/NO configuration in the design of the pneumatic circuit to avoid the temperature rise of continuous energization.
- For continuously energized situation, please contact us.

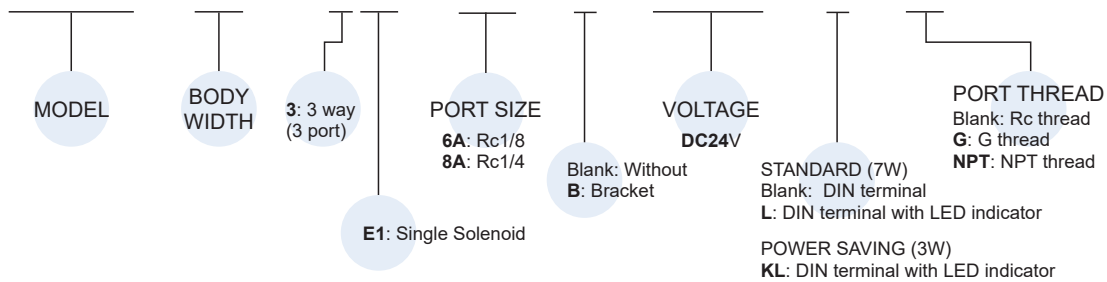
\*1. Power saving covert time 350ms.

\*2. Energy saving DC24V: -5%~+10%.

\*3. ( ) The value for with bracket.

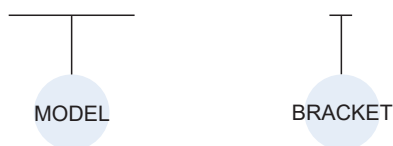
## Order example of valve

MVDC - 300 - 3E1 - 6A - B - DC24 - L - G

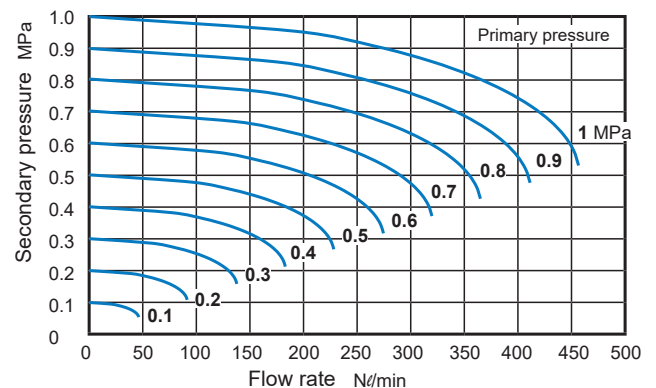


## Order example of bracket

MVDC - 300 - B



## Flow features



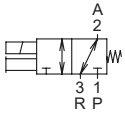
# MVDC-300 Dimensions / Mounting accessories



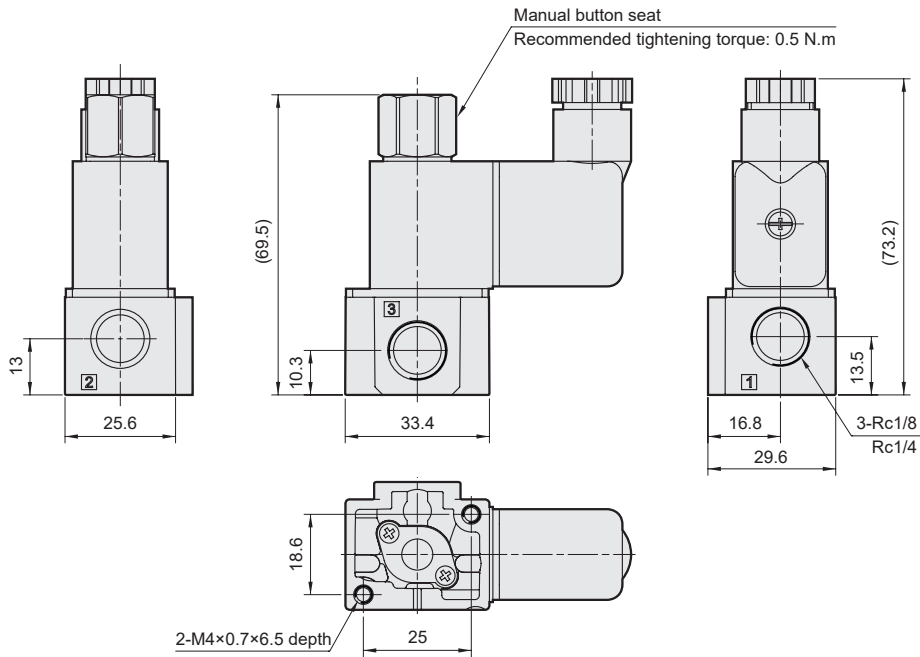
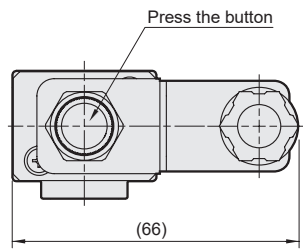
## SOLENOID VALVE (DIRECT OPERATED TYPE)

Mindman

### MVDC-300-3E1



Port 1P: NC  
Port 2A: COM  
Port 3R: NO



### Mounting accessories

#### MVDC-300-B

Bracket

