

Features

- Aluminium alloy tube provides both smooth lines and high corrosion resistance.
- Self lubricated nose bush gives long life.
- Versatile porting position available.
- End cushioning at both ends reduces impact loads.
- Available with magnetic piston and sensors.

Specification

Model	MCKGA / B	
Acting type	Double acting	
Tube I.D. (mm)	50	63
Medium	Air	
Operating pressure range	0.05~1 MPa	
Proof pressure	1.5 MPa	
Ambient temperature	-5~+60°C (No freezing)	
Lubrication	Not required	
Available speed range	50~500 mm/sec	
Sensor switch (*)	RCA, RDKP	
Sensor switch accessories	RCA	BGA50 BGA63
	RDKP	PMB-040

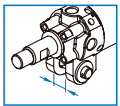
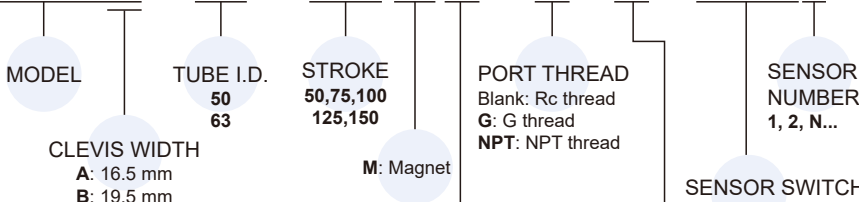
Table for standard stroke

Tube I.D.	Stroke (mm)
ø50, 63	50, 75, 100, 125, 150

* RCA, RDKP specification, please refer to page 5-2, 13.

Order example

MCKGA - 50 - 100 M A - G - I - RDKP2





Adjustable type	Flow adjustable		Adjustable cushion	
	Rod cover	Head cover	Rod cover	Head cover
Blank: Standard	○	○	×	○
A: A type	○	○	○	○

SENSOR SWITCH
Blank: Without
RDKP: Sensor with installation set
RCA: Sensor with BGA**


ACCESSORIES
Blank: Without
I: I connector with pin
Y: Y connector with pin

Order example of connector

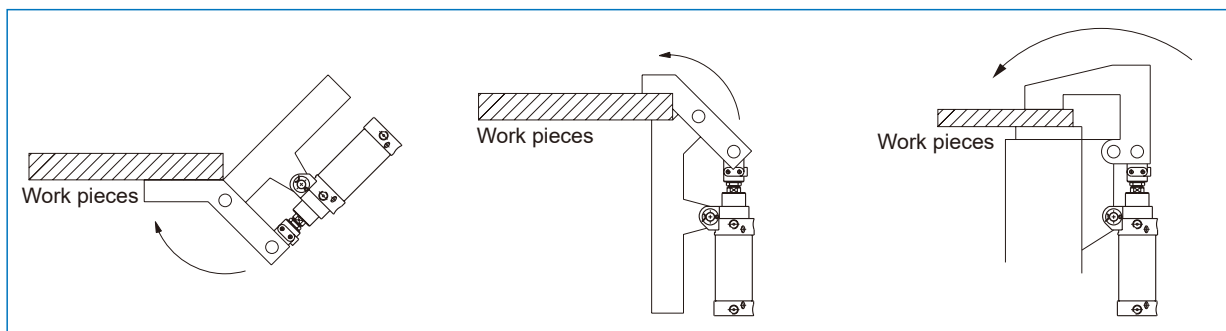
Code	Y*	I
Mounting		
Tube I.D.		
ø50	Y-K2-50-A	I-K2-50
ø63	Y-K2-50-B	

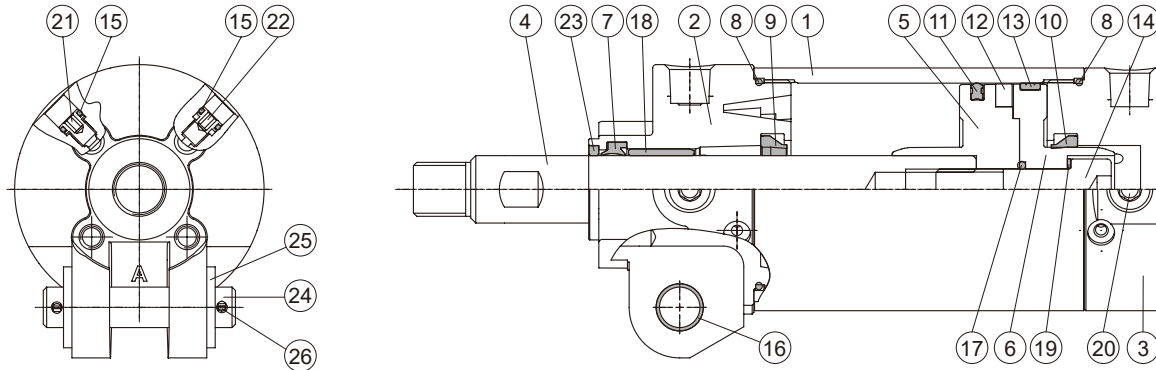
* The A and B please refer to clevis width of order example.

Order example of pin

Code	Applicable Y & I connector
	PIN-1-P (With split pin)
Mounting	
Tube I.D.	
ø50	PIN-K2-50-1-P
ø63	

Application examples





Material

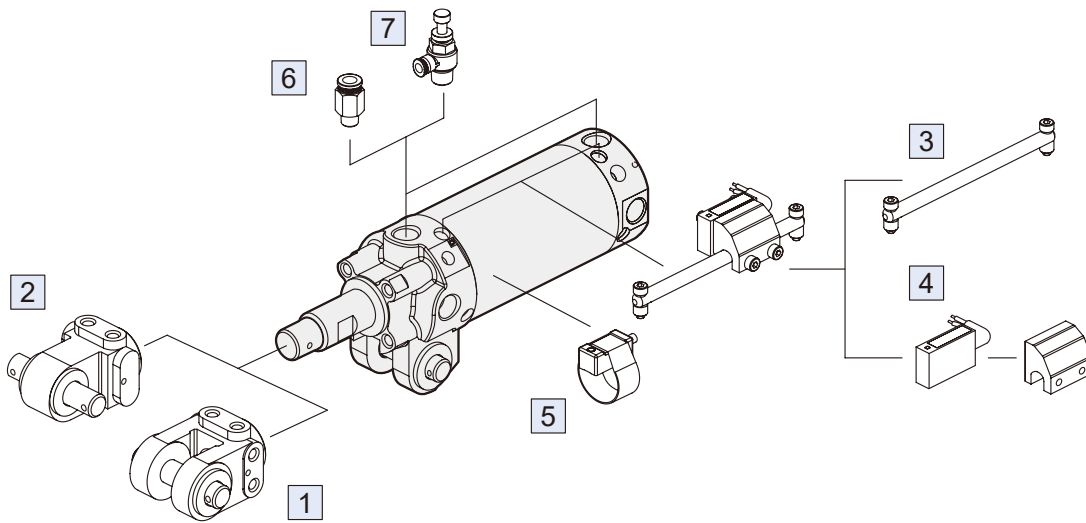
No.	Part name	Material	Q'y	Component parts(inclusion)	Repair kits (inclusion)
1	Tube	Aluminum alloy	1		
2	Rod cover	Aluminum alloy	1	●	
3	Head cover	Aluminum alloy	1	●	
4	Piston rod	Medium carbon steel	1		
5	Piston-R	Aluminum alloy	1	●	
6	Piston-H	Aluminum alloy	1	●	
7	Rod packing	NBR	1	●	●
8	Cover ring	NBR	2	●	●
9	Cushion packing-R (*)	NBR	1	●	●
10	Cushion packing-H	NBR	1	●	●
11	Piston packing	NBR	1	●	●
12	Magnet ring	Magnet material	1	●	
13	Wear ring	Resin	1	●	
14	Piston bolt	SCM	1	●	
15	Need valve packing	NBR	4	●	●
16	Bush	Copper	2	●	
17	Piston gasket	NBR	1	●	●
18	Rod bush	Copper	1	●	
19	Washer	Carbon steel	1	●	
20	Seal screw	Carbon steel	4	●	
21	Flow needle valve	Copper	2	●	
22	Cushion needle valve	Copper	2	●	
23	Scraper	Copper	1	●	
24	Pin	Carbon steel	1	●	
25	Washer	Carbon steel	2	●	
26	Split pin	Carbon steel	2	●	

* Flow adjustable type without cushion packing-R.

Order example

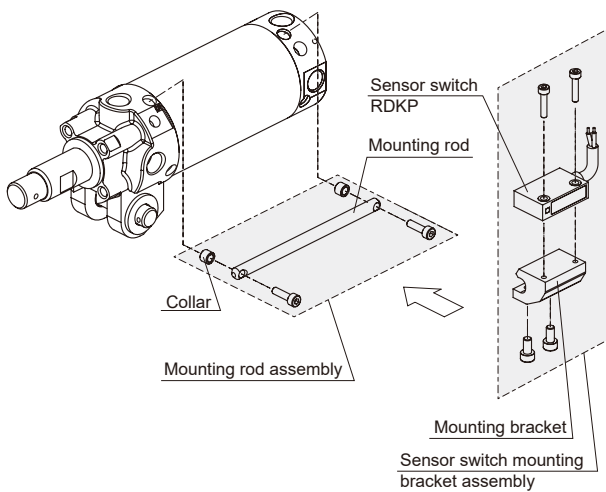
Component parts / Repair kits

Tube I.D.	Component parts	Repair kits
ø50	CP-MCKG*-50	PS-MCKG-50
	CP-MCKG*-50-A	PS-MCKG-50-A
ø63	CP-MCKG*-63	PS-MCKG-63
	CP-MCKG*-63-A	PS-MCKG-63-A



No.	Accessories	Page
1	Accessories Y+PIN	2-23
2	Accessories I+PIN	2-23
3	Mounting rod assembly	2-22
4	Sensor switch RDKP+PMB-040	5-13
5	Sensor switch RCA+BGA**	5-2
6	Fitting PC (PISCO)	8-3 (Vol.1)
7	Speed controller JSC (PISCO)	8-15 (Vol.1)

Installation of sensor switch

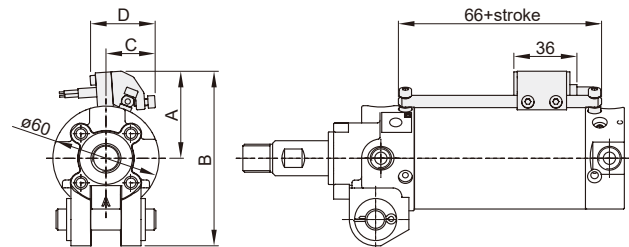


Order example of mounting rod assembly

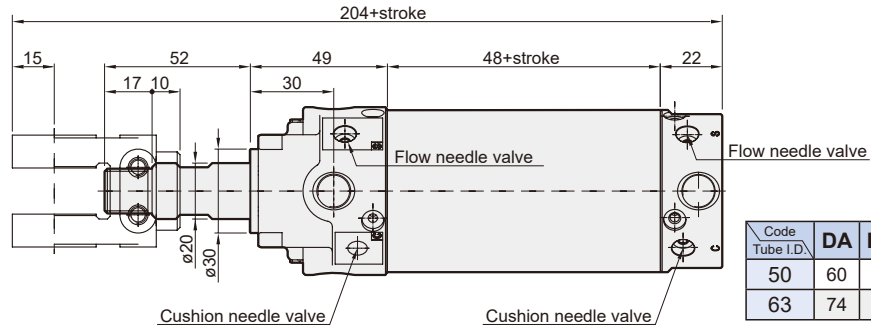
RZ – MCKG – 50

MODEL

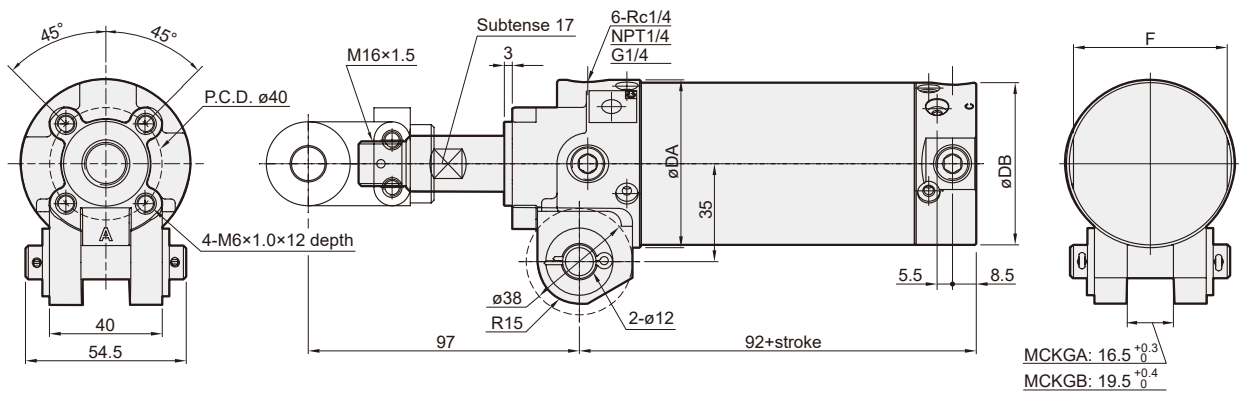
STROKE
(mm)



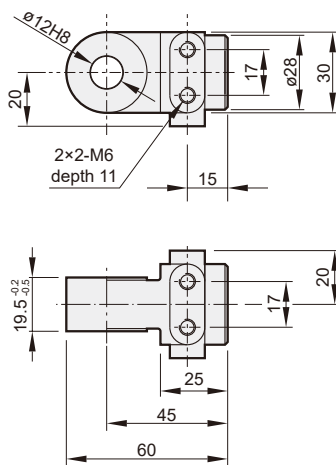
Code Tube I.D.	A	B	C	D
50	49.7	99.7	28.2	37.3
63	56.3	106.3	30.6	36.6



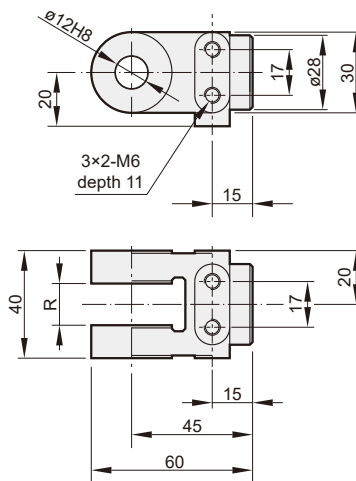
Code Tube I.D.	DA	DB	F
50	60	58	55
63	74	72	69



I connector



Y connector



Code Model	R
MCKGA	16.5 $\begin{smallmatrix} +0.3 \\ 0 \end{smallmatrix}$
MCKGB	19.5 $\begin{smallmatrix} +0.4 \\ 0 \end{smallmatrix}$

Pin

