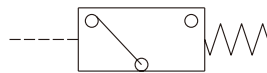




### Symbol



### Order example

**MPS — 6A — R**

MODEL

Blank: by prot thread fitting  
R: by O-ring fitting

### Specification

Model	MPS-6A	MPS-6A-R
Fitting method	R1/8 (for port thread fitting)	O-ring: S4 (for O-ring fitting)
Ambient temperature	-5~+60°C (No freezing)	
Max. operating pressure	0.8 MPa	
Proof pressure	1 MPa	
Pressure setting range	0.1~0.7 MPa	
Operation output	Normal open ON ( Red led lighting up ) above value	
Sensor switch	RCE2 Reed switch / Normal open Voltage range: 5~110V DC/AC Max. Current: 100mA	
Connect diagram		
Weight	185 g	189 g

