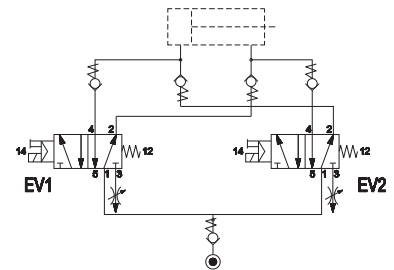
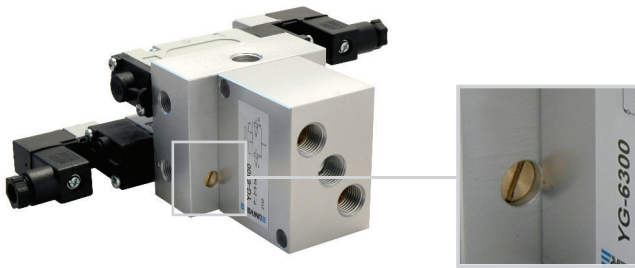


CHARACTERISTICS

Ambient temperature	-20 ÷ +50 °C
Fluid	50 µm filtered air, with or without lubrication
Pressure	1,5 ÷ 9 bar
Connections	G1/4
Pace regulators	embodied
Function	it allows cylinders to stop with highly precise position repeatability
Solenoid Valves	GL series
Commutation system	spool
Electropilot/Coil	A series/U05 series
Voltage	24 V DC - 12 V DC - 24 V AC - 110 V AC - 230 V AC (only version with external electrical connection)
Power consumption	U05 = 2 W (DC) 2,3 VA (AC)
Manual override	recessed button - 1 position



■ Embodied pace regulators



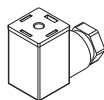
For further information please contact our Sales Office

DD- ...

AM-5109



- DD-040 24 V AC
- DD-041 12 V DC
- DD-051 24 V DC
- DD-060 110 V AC
- DD-070 230 V AC



15 mm U05 Coil - Faston

15 mm Connectors