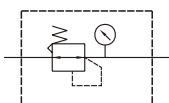


# MAR100 series

**AIR UNIT (R.UNIT)**



## Symbol



## Specification

Model	MAR100
Port size	M5×0.8
Medium	Air
Max. operating pressure	1 MPa
Proof pressure	1.5 MPa
Regulated pressure range	0.05~0.7 MPa
Ambient temperature	-5~+60°C (No freezing)
Attachment	Pressure gauge (PG-25), bracket
Weight	100g

## Order example

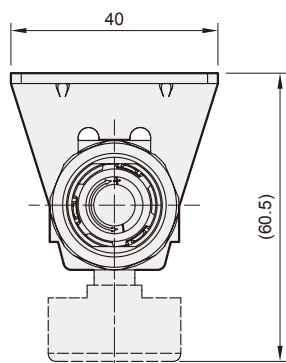
**MAR100 — M5 — B — C**

MODEL

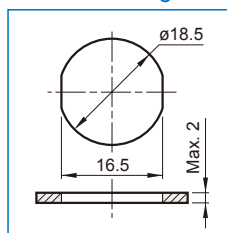
PORT SIZE

BRACKET

PRESSURE GAUGE



## Panel mounting hole



## Flow feature

